



Key clip with leather belt hook

Made from real leather and snaps on and off a belt. Bolt snap allows the removal of keys.
 Dimensions: 150mm (6") belt hook.

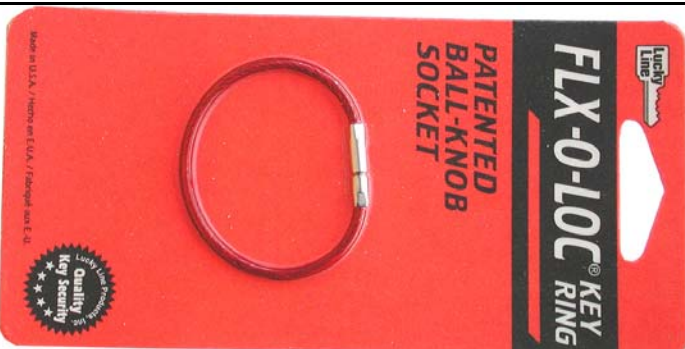
Product	Part Number
Key Clip & Belt Hook – Individual Display Card	45201



Nylon key guard

Durable, lightweight nylon webbing snaps over belt of handbag strap for easy access to keys.
 Clip dimensions: 120mm (4.7") long, with a 50mm (2") clip. Supplied in assorted colours.

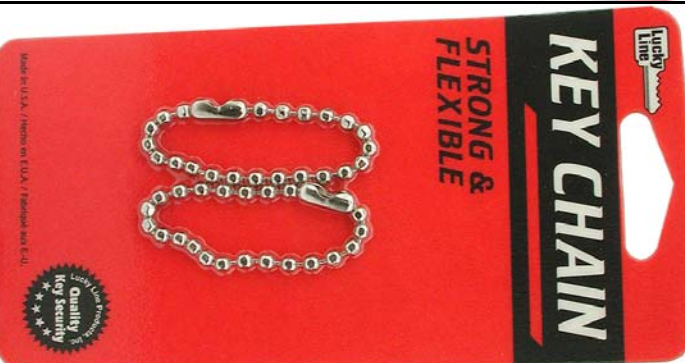
Product	Part Number
Nylon Key Guard – Individual Display Card	41801



Flx-O-Loc key ring

Strong, flexible, corrosion-resistant aircraft cable key ring. Unique patented ball-knob socket assures keys stay secure. Dimensions: 125mm (5") when undone. Measures approximately 40mm (1.5") in diameter when closed. Supplied in assorted colours.

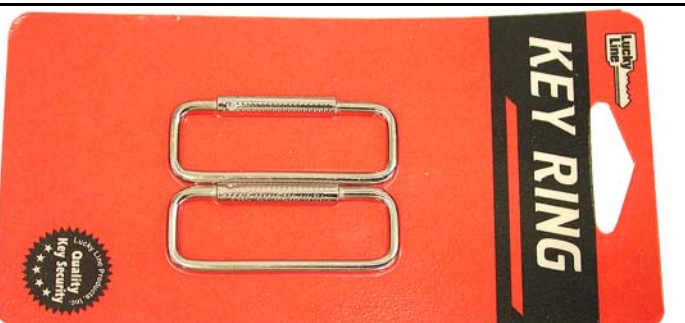
Product	Part Number
Flx-O-Loc – Individual Display Card	71101



Ball chain key ring

Strong and flexible alternative to the traditional split ring, as a way to secure keys.
 Dimensions: 100mm (4").

Product	Part Number
Ball Chain Key Rings – Twin Display Card	31402
Also available	
Ball Chain Key Ring and Connector – Bag of 100	1K or 31400
Ball Chain Key Ring and Connector – Card of 24	1KC



Spring sleeve key ring

Compact key ring with spring loaded closure. Pull to open, release to close.
 Dimensions: 50mm (2") x 18mm (0.75").

Product	Part Number
Spring Sleeve Key Rings – Twin Display Card	70402
Also available	
Spring Sleeve Key Rings – Card of 24	2KC



Key tags

Special "tang" ring saves fingernails and allows keys to be added or removed easily. Remove key ring and paper insert slides out.

Paper insert dimensions 45mm (1.77") x 19mm (0.75"), with 30mm (1.18") tang ring. Supplied in assorted colours.

Product	Part Number
Key Tags – Twin Display Card	12302



Pocket chain and clip

Trigger snap clips easily to belt loop or handbag and allows the chain to be attached to wallet, keys or mobile phone. Nickel plated steel chain resists rusting.

Chain dimensions: 450mm (18") with 40mm (1.50") clip and 28mm (1.1") split ring.

Product	Part Number
Pocket Chain and Clip – Individual Display Card	40101



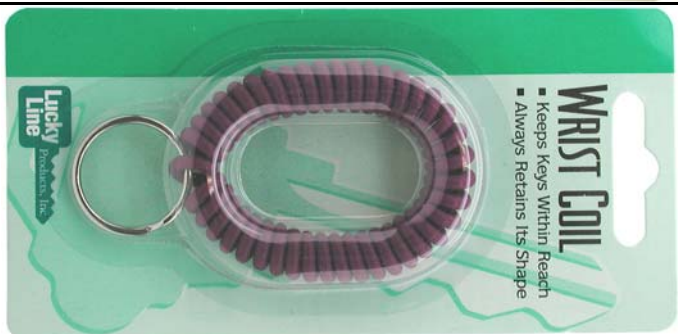
Pocket chain

Keeps keys close to hand. Recommended that it be used in conjunction with Secure-A-Key (40501 & 40401).

Nickel plated steel chain resists rusting.

Dimensions: 110mm (4.3"), complete with 20mm (0.75") and 30mm (1.2") split rings.

Product	Part Number
Pocket Chain – Individual Display Card	40301



Wrist coil

Superior quality coil stretches easily to fit comfortably over wrist for work or active sports. Keys can be used while still on wrist. Always retains its shape. High quality tempered split key ring included.

Product	Part Number
Wrist Coil – Twin Display Card	41001



Mini designer key coil

Allows keys to be clipped to a belt loop or handbag for easy access. By clipping the trigger snap to the split ring it becomes a useful wrist coil. Superior quality coil will not stretch out. Great for holding a magnetic card.

Dimensions: 45mm (1.8") clip, 22mm (0.86") split ring and 125mm (5") coil. Supplied in assorted colours.

Product	Part Number
Mini Key Coil – Individual Display Card	41301
Also available	
Mini Key Coil - Bag of 24 in assorted colours	413/24



Plastic key coil and swivel hook

Lightweight, strong plastic swivel hook attaches to belt loop or handbag. Perfect for use with magnetic cards. Coil stretches to over 610mm (24"). Supplied in assorted colours.

Product	Part Number
Key Coil – Individual Display Card	41601
Also available	
Display Card of 24 in Assorted Colours	416/24
Lucky Line Display Card of 12	416
Bulk Refill Bags in Single Colours (Multiples of 50) - White, Yellow, Green, Light Blue, Dark Blue, Orange, Red, Violet, Black, Fluorescent pink	416/1-COLOUR



Assorted split rings

Attractive display card of split rings. An assortment of 10 in different styles and sizes.

Product	Part Number
Split Rings – Assorted Card of 10	7052/10C



Brass plated steel split rings

These high quality, tempered spring steel key rings will not lose their shape, even after repeated use. Heavy brass plating resists rusting. Notched for easier access, Dimensions: 25mm (1").

Product	Part Number
Brass Plated Rings – Individual Display Card	77402



2 tang rings

These high quality, tempered, spring steel key rings will not lose their shape, even after repeated use. Heavy nickel plating resists rusting. Notched for easier access to keys. Saves fingernails. Dimensions: 28mm (1.1")

Product	Part Number
2 Tang Rings - Individual Display Card	75202



57mm split ring

Tempered steel split ring. Dimensions: 57mm (2.25").

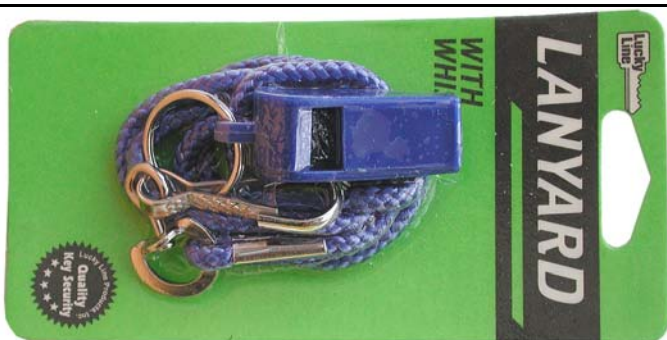
Product	Part Number
2.25" Split Ring – Individual Display Card	77001



Lanyard

Made of strong, woven nylon, the lanyard fits comfortably around neck. Holds keys, whistle or photo I.D. card securely. The plastic swivel keeps items flat against chest. Dimensions: over 550mm (21") in length. Supplied in assorted colours.

Product	Part Number
Lanyard – Individual Display Card	41401



Lanyard with whistle

Ideal for referees and lifeguards. Clip also allows the carrying of keys or ID cards, Dimensions: 60mm (2.5") with 25mm (1") split ring. Supplied in assorted colours.

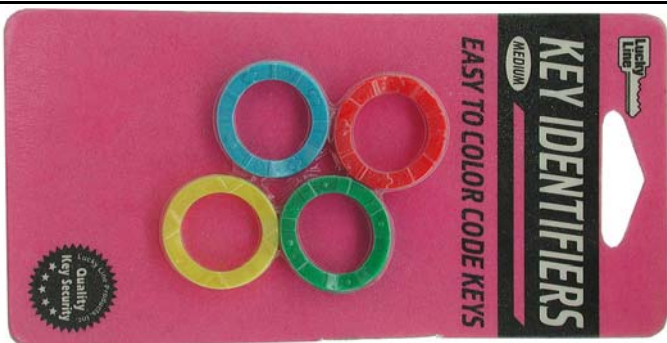
Product	Part Number
Lanyard with Whistle– Individual Display Card	42201



4 key identification caps

These soft plastic caps allow the identification of keys either by touch or colour. Designed for keys with a top (bow) of approximately 25mm (1") wide. Supplied in assorted colours.

Product	Part Number
Key ID Caps – 4 Per Card	16504



4 medium key identification rings

These soft plastic rings allow the identification of keys either by touch or colour. Designed for keys with a top (bow) of approximately 25mm (1") wide. Available in standard or neon colours.

Product	Part Number
Key Identifiers – 4 Per Card	16704
Also available	
Key Identifiers Large - 3 Per Card	16603
Key Identifiers Small - 4 Per Card	16404



Photo key tag

Holds two wallet size photos to personalize your keys. Smooth rounded corners. A nickel plated, tempered split ring and overlapping ring help the key tag lie flat. Dimensions: 57mm (2.25") x 82mm (3.25"). 30mm (1.18") split ring.

Product	Part Number
Photo Key Tag - Individual Display Card	20501



Budget hotel tags

Rigid plastic and comes complete with blank white card insert that you write your number etc. on and a clear acrylic pane to cover and protect. Engraved plastic inserts available to order. Supplied in two assorted colours.

Product	Part Number
Hotel Tags and Inserts - Display card of 2 in assorted colours.	2HH/2C
Also available	
Hotel Tag – Supplied in Multiples of 50 in Blue	1HH-BLUE
Paper & Pane Inserts - Supplied in Multiples of 50	1HH-PANE



Key light

Fits standard household and some car keys. Helps find the keyhole in the dark.

Product	Part Number
Key Light – Individual Display Card	90801



Graphite

An excellent dry lubricant to use on metal, wood, plastic, rubber or wherever two surfaces rub together. Use on hinges or drawers for smoother operation or in door locks to prevent sticking and wearing. Net weight: 3.25 grams.

Product	Part Number
Graphite - Individual Display Card	95001



Large key ring and whistle

Help protect bunches of keys with this large pull apart key ring. Incorporates whistle for added personal security. Ring diameter: 82mm (3.3”).

Product	Part Number
Large Key Ring & Whistle – Individual Display Card	91101



Travel tag

This attractive simulated leather tag allows easier identification of luggage. Paper insert slides out easily to record information. Sturdy buckle keeps tag secure. Tag dimensions: 110mm (4.3”) x 55mm (2.2”). Window measures 30mm (1.2”) x 57mm (2.3”).

Product	Part Number
Travel Tag – Individual Display Card	63101

Personalised Key Tags



Personalised key tag with ball chain

These personalised tags are made of K-Resin and durable transparent propionate.

The tag contains a paper insert, which can be printed with your details in either black, reflex blue or red. The reverse side has three printed lines on for adding extra details by hand.

These can be supplied unassembled or assembled at a nominal extra cost.

Comes complete with 115mm (4.5") ball chain for easy assembly. The tag measures 75mm (3") by 32mm (1.25"). The print area measures 38mm (1.5") x 22mm (0.87"). Minimum order 1000.

Product	Part Number
Personalised Key Tag with Ball Chain	951BC-CLEAR



Low cost personalised key tag

A low cost giveaway key fob that keeps your name in front of your customer.

Printed in black with three lines on the back to write your own identification details on. Comes complete with ring (supplied unassembled).

Tag measures approximately 60mm (2.5") x 30mm (1.75"). Can be produced on either white or yellow card (rail board).

Minimum order 500.

Product	Part Number
Printed on White Card (Rail Board)	95983W
Printed on Yellow Card (Rail Board)	95983Y

Key accessory displays



Key hider displays

Attractive wall or counter display easels. Has a 'picture frame type stand' to enable it to be stood on a counter or fixing holes at the top to attach it to a wall. The magnetic displays are steel so that the hiders can be taken off then reattached. Easels measure 229mm (9") x 355mm (14").

Product	Part Number
Large Pouch Key Hider Easel – 10 Pouches	91410
Large Magnetic Key Hider Steel Easel – 10 Hiders	91010
Refills for Large Magnetic Easel – Box of 12	91012
Extra Large Magnetic Key Hider Easel – 10 Hiders	91210
Refills for Extra Large Magnetic Easel – Box of 6	91200



Example of fully stocked display



3 prong counter

Supplied unstocked. Allows certain key accessories to be sold at a Point Of Sale where space is at a premium. Dimensions: 180mm(7") x 135mm(5.3") x 110mm(4.3"). Bottom of hook to counter measures 130mm(5.1").

Product	Part Number
Empty Counter Display – 3 Prong Display	CD-1



Ball chain service centre

Compact display holds the five most common spools of bulk chain. Metal header card identifies types of chain and uses. Plastic tilt bins hold nine of the most useful types of couplings, connectors and pendants. Tilt bin labels suggest uses. Designed for counter top, slat wall or pegboard. Dimensions: 610mm (24") wide x 355mm (14") high x 150mm (6") deep.

Product	Part Number
Fully Stocked Ball Chain Service Centre	34350
Refills	
No. 3 Ball Chain Spool. Aluminium – 30.5m	32150
No. 6 Ball Chain Spool. NP Steel – 30.5m	31700
No. 6 Ball Chain Spool. Stainless Steel – 30.5m	31750
No. 6 Ball Chain Spool. Yellow Brass – 30.5m	31800
No. 10 Ball Chain Spool. NP Brass – 30.5m	32550
No. 3 Connector. Aluminium – 100 pkg	32250
No. 6 Coupling. NP Brass – 100 pkg	31900
No. 6 Coupling. Yellow Brass – 100 pkg	32000
No. 10 Coupling. NP Brass – 100 pkg	32600
No. 6AD Coupling for Screw or Rivet. NP Brass – 100 pkg	32700
No. 10AD Coupling for Screw or Rivet. NP Brass – 100 pkg	32800
No.6-P Detachable Pendant. NP Brass – 100 pkg	30900
No.6-P Detachable Pendant. Yellow Brass – 100 pkg	31000



Point of sale counter jars

These plastic 'cookie style' jars are ideal to use in conjunction with some of our refill / bulk packs. The jar is completely clear to allow the customer to see the accessory. Complete with an opaque lid.

Product	Part Number
Small Jar – 230mm(5") x 120mm(4.7") x 120mm(4.7")	JAR-102
Large Jar – 200mm(8") x 160mm(6") x 160mm(6")	JAR-105



Empty rotating display

Rotating counter key accessory display. Easy to turn, made of perforated sheet steel, supplied without accessories and powder coated. Three panels. Complete with 144 steel hooks. Dimensions: 342mm (13.5") x 342mm (13.5") x 650mm (25").

Product	Part Number
Empty 3 Panel Rotating Display	Display-3000E

Example of what it could be like fully stocked.